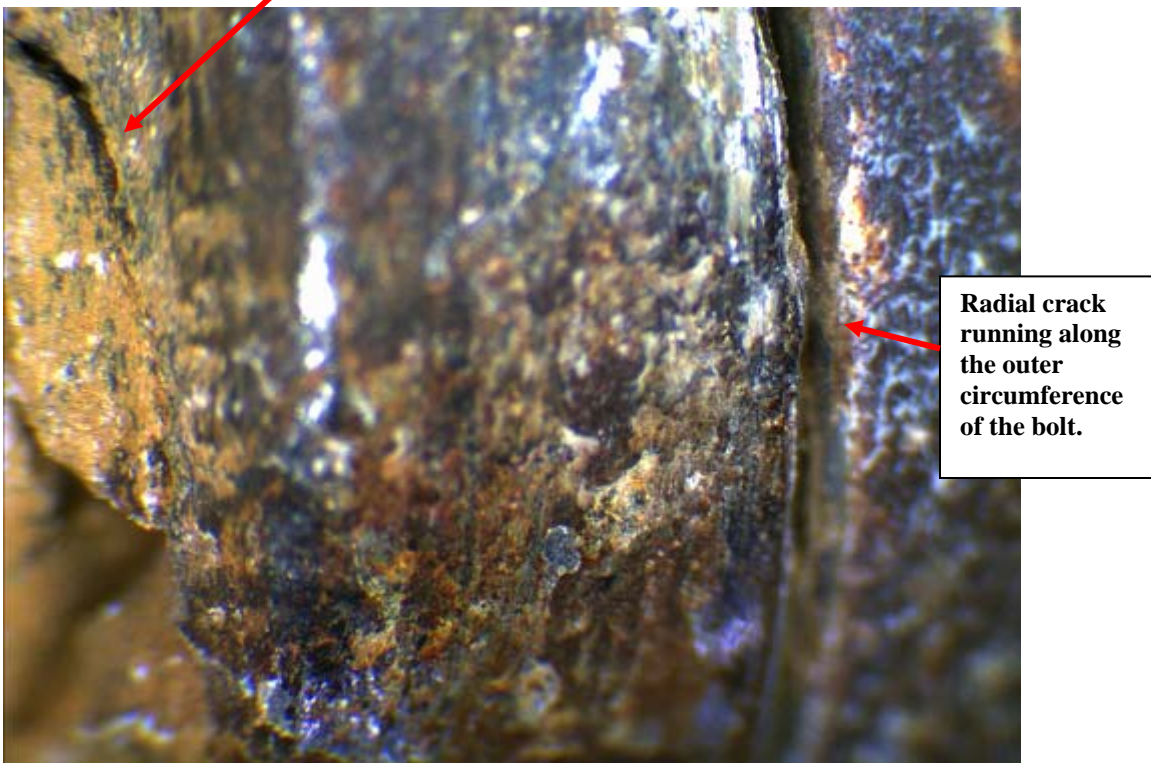
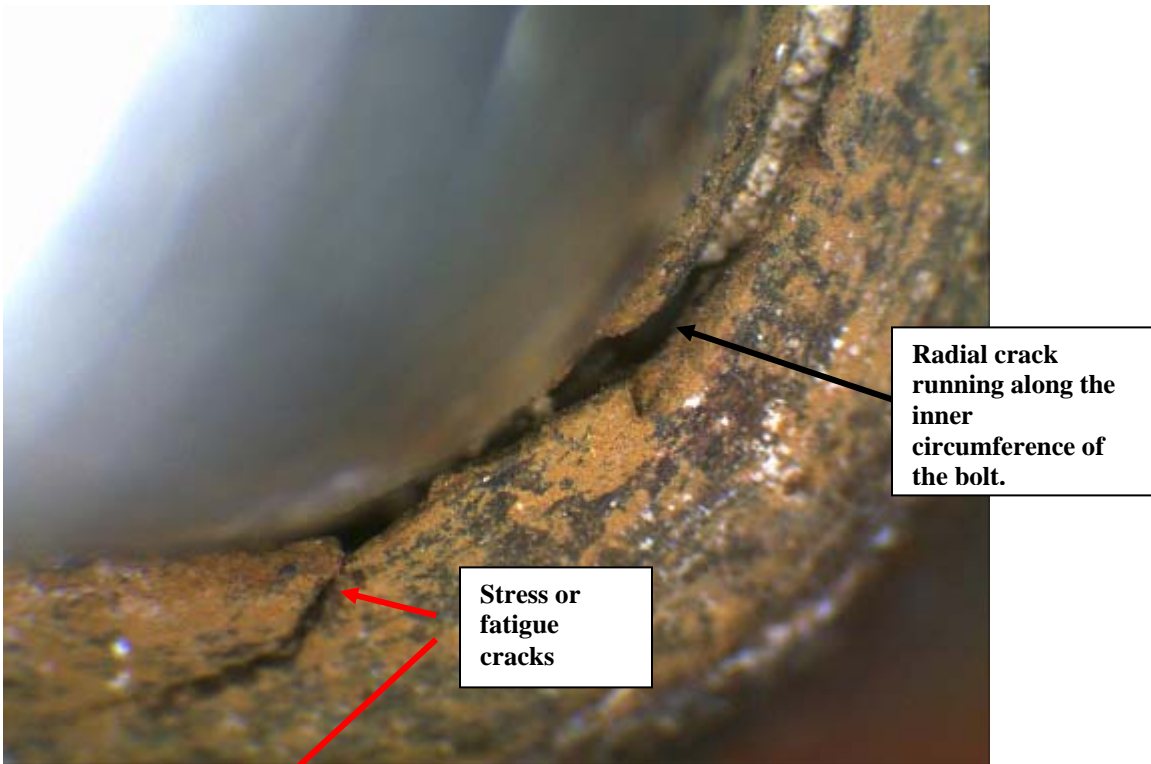
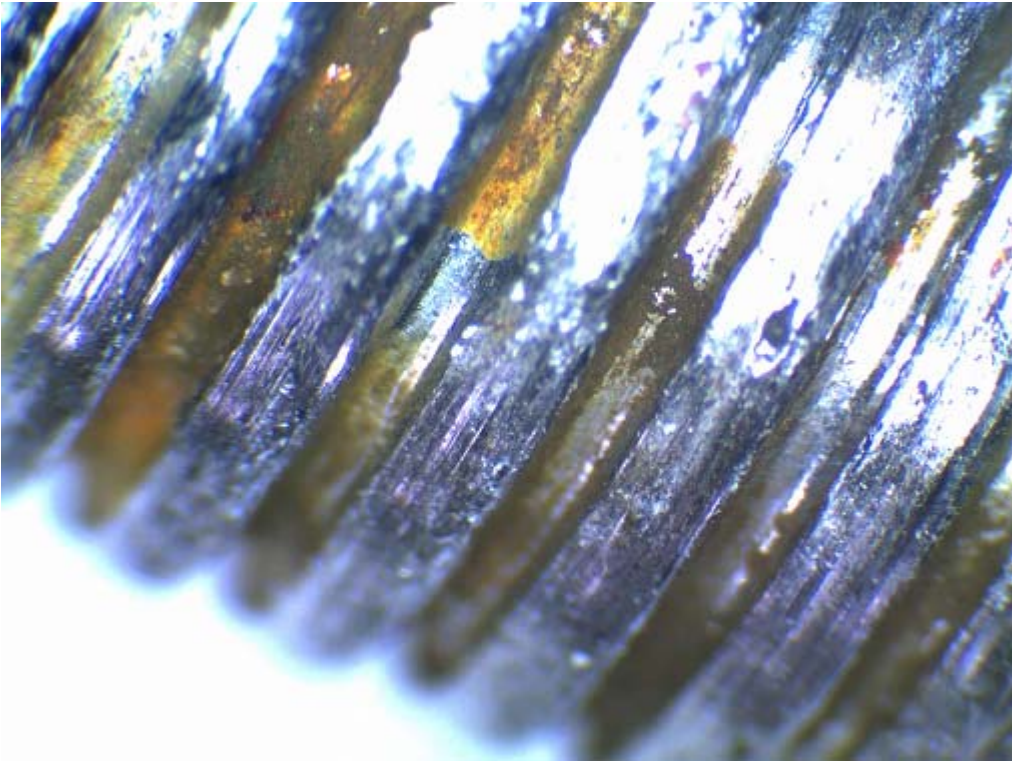


1. Kings of Rap removed hardware.

The steel studs are rusted and some show stress or corrosion cracks. The threads are very worn and one can tell from the wear locations that on some bolts only 50% of the thread was actually engaged.





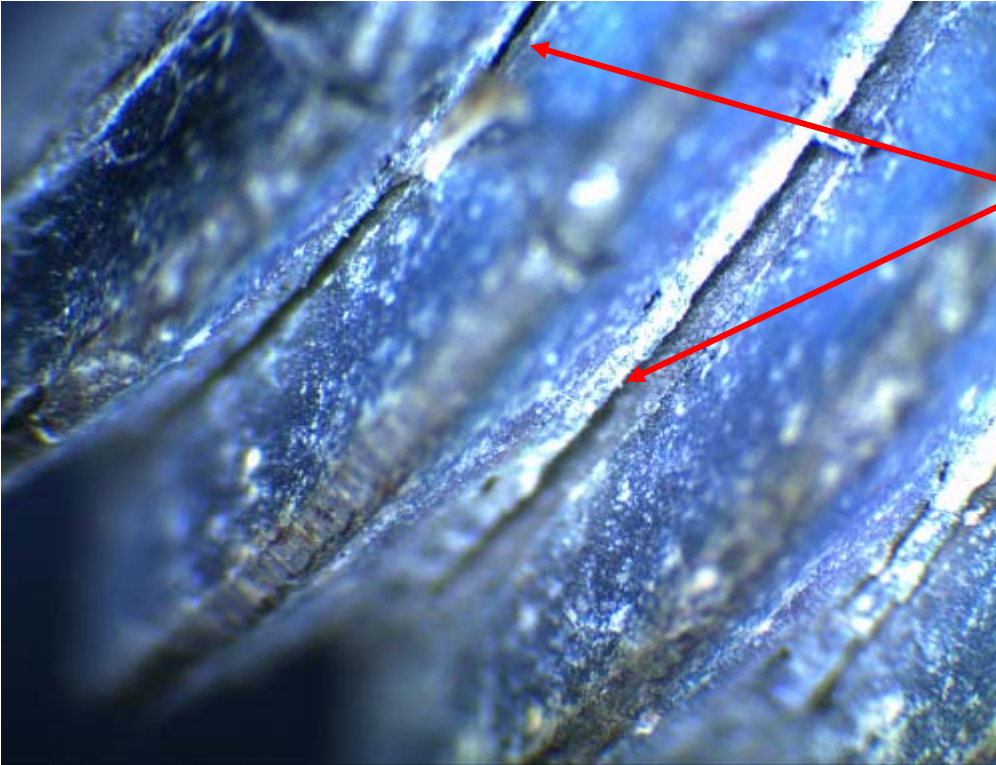
**Kings bolt
thread worn
down = less
axial pull out
strength.**



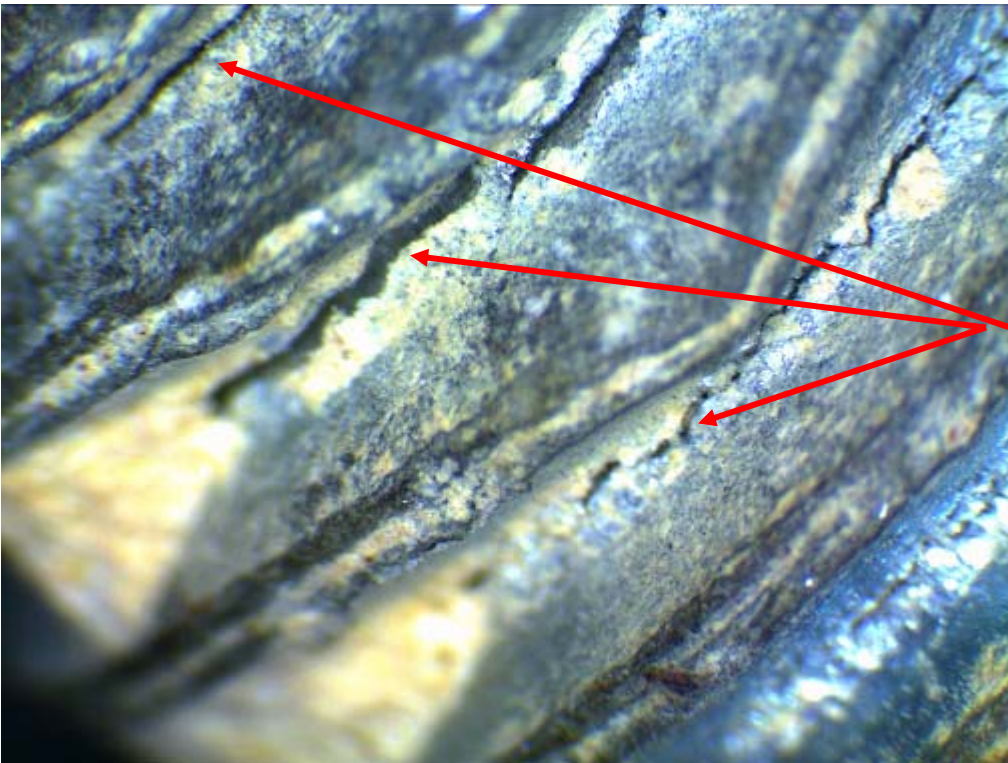
**Kings crux bolt,
significant
corrosion
damage.**

2. Toxic removed hardware:

3/8" studs are in bad shape. Thread completely flattened by hanger movement under load. Significant amount of rust build up. Stress cracks close to hanger location in radial direction.



Toxic, radial stress cracks close to bolt hanger location. 3/8" stud.



Toxic, radial stress cracks on 3/8" stud .